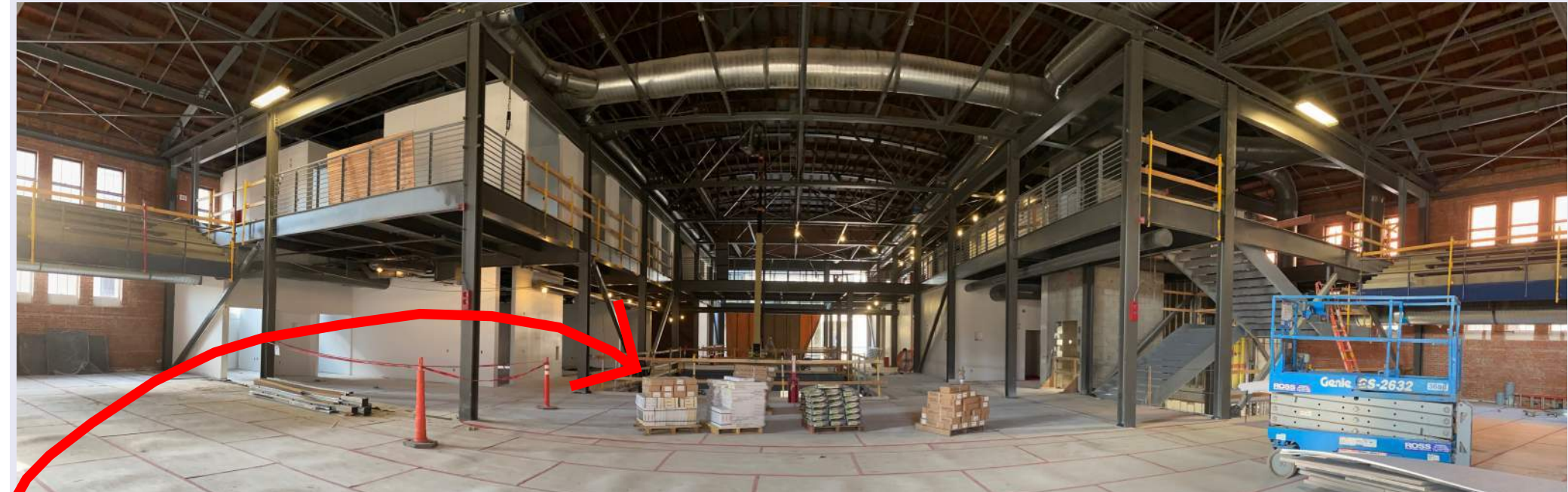
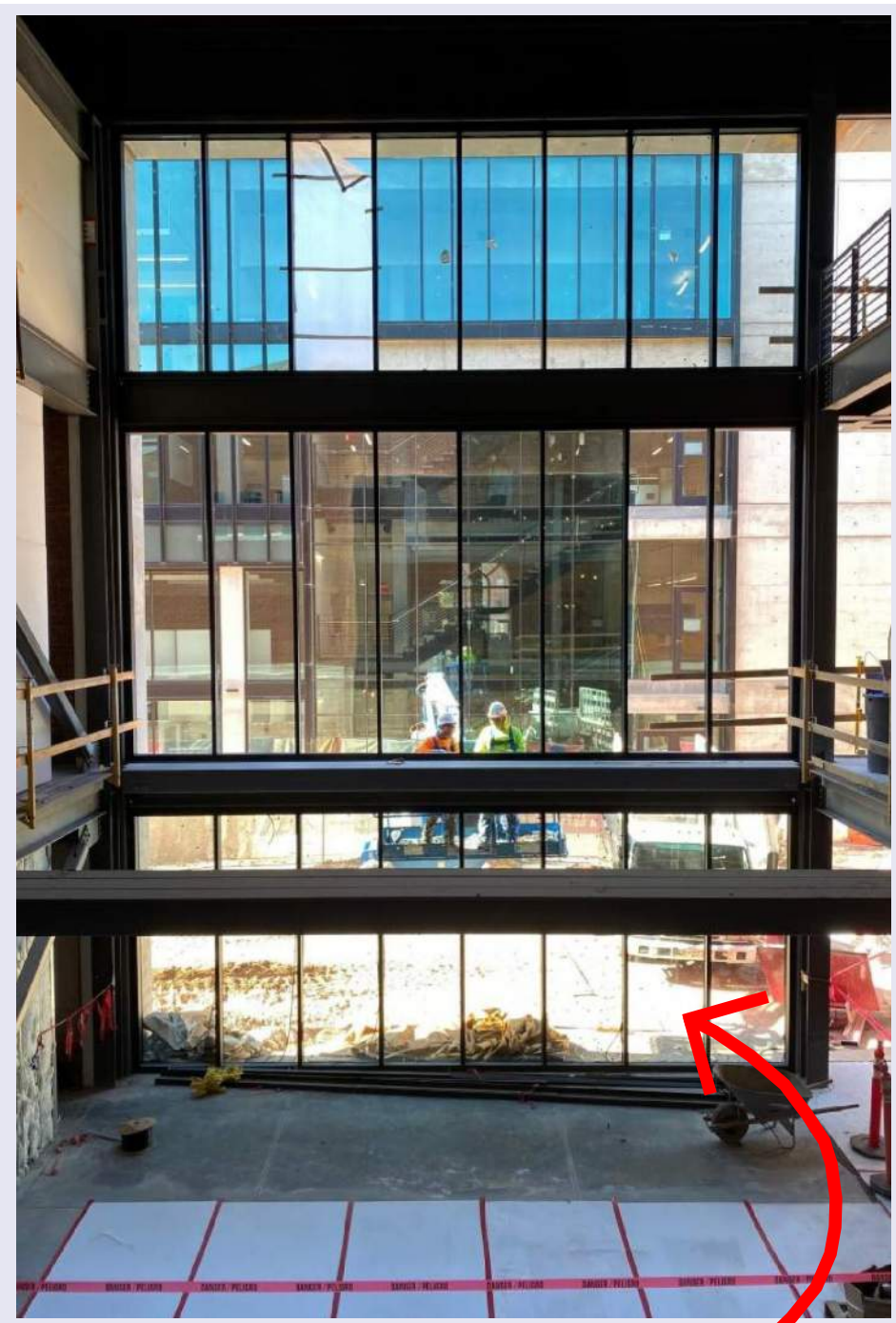
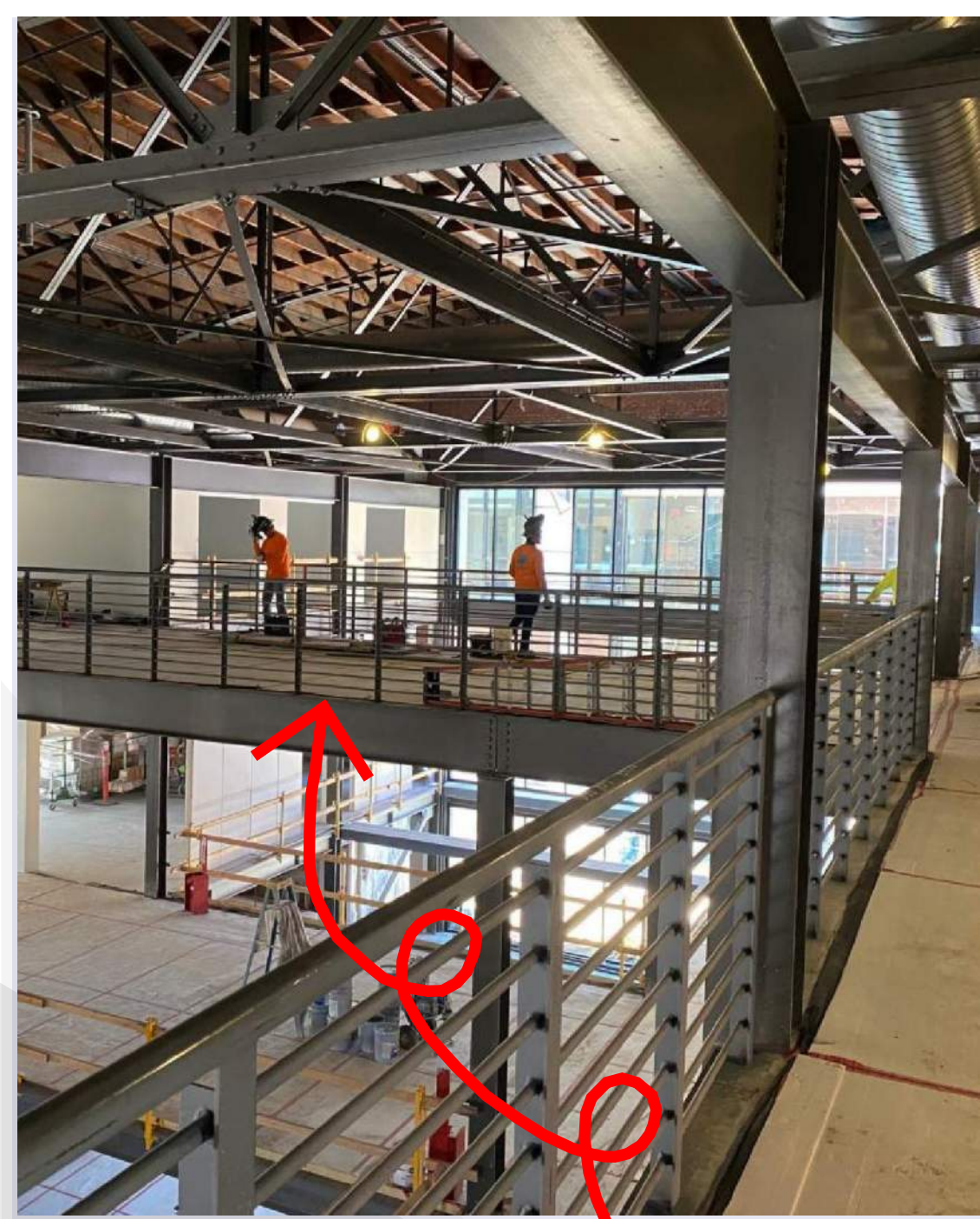


Student Success District Bear Down Gym Preservation & Renovation

Construction Update - Week of August 2nd, 2021



Inside the main entrance standing on the historic gym floor, looking south. Guardrail is being installed on Level 3, tile is staged on the level 2 deck and will go into the bathrooms this week, and tape and texture is finishing up on level 1 walls and ceilings.

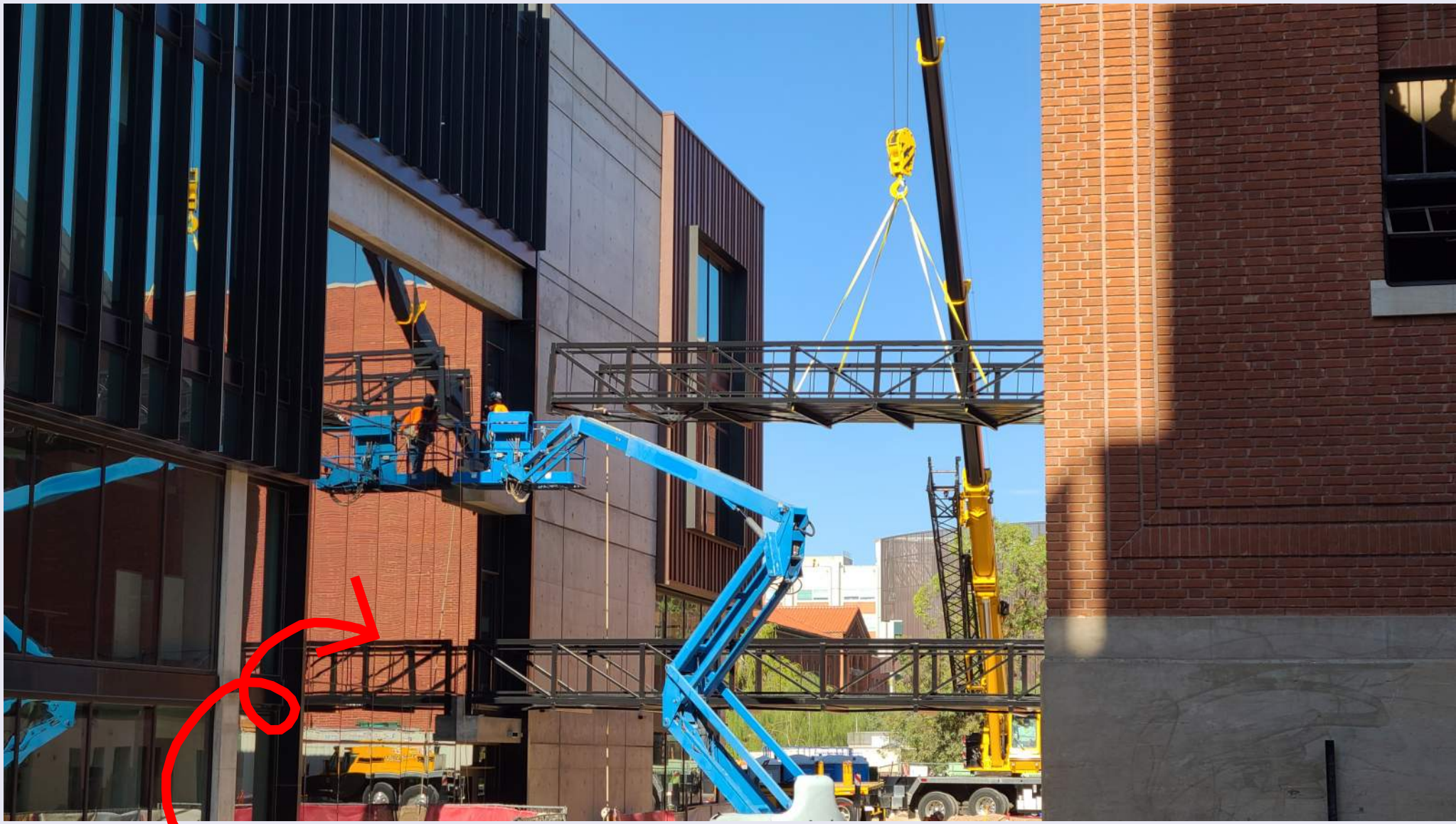


On the left, up on level 3 the guardrail is being installed. On the right, glass is filling in the south entry. Following the glass installation, the mechanical units can start up and the building will get air conditioning!



Student Success District Bear Down Gym Preservation & Renovation

Construction Update - Week of August 2nd, 2021



This week, the two bridges were installed on the south end of the Bear Down Gym. They will connect the historic gym (right) to the new Bartlett Academic Success Center (left) at levels 2 and 3.

The bridge installation marks a major milestone in the Student Success District project as we are a big step closer to connecting all four buildings within the district: the Main Library, the Albert B. Weaver Science-Engineering Library, the Bartlett Academic Success Center and the Bear Down Gym.

